

## TECHNICAL DATA/SPECIFICATIONS

MODEL: SRE-2000E ELECTRA-RIDE ELITE FOR OUTDOOR USE

RATED LOAD: 400 LBS, ONE PASSENGER

POWER SOURCE: 24 VOLT DC COMPRISED OF (2) 7 AMP/HR  
12 VOLT SEALED BATTERIES.

110 VOLT AC 1.5 AMP, 24 VOLT DC 3 AMP  
CONTINUOUS MONITORING CHARGER.  
CHARGER MUST BE LOCATED INSIDE.

DRIVE: 24 VOLT DC MOTOR, 2 POLE RATED 1.02 HP  
NO LOAD SPEED OF 3800 RPM.

20:1 RIGHT ANGLE SELF LOCKING WORM DRIVE  
GEAR BOX WITH 4:1 INTERMEDIATE REDUCTION  
USING DUAL 3 V WIDE BELTS.

FINAL DRIVE: RACK & PINION - INTEGRATED 8dp GEAR RACK  
ON RAIL WITH A SPUR GEAR ON THE GEARBOX  
OUTPUT SHAFT.

BRAKING: DYNAMIC MOTOR BRAKING THROUGH THE MOTOR  
CONTROLLER AND SELF LOCKING WORM GEAR.

CONTROLS: CONTINUOUS PRESSURE ROCKER SWITCH LOCATED  
ON ARMREST AND WALL MOUNTED CALL/SEND  
CONTROLS LOCATED AT BOTH TOP & BOTTOM  
LANDINGS. ALL CONTROLS ARE KEYED.

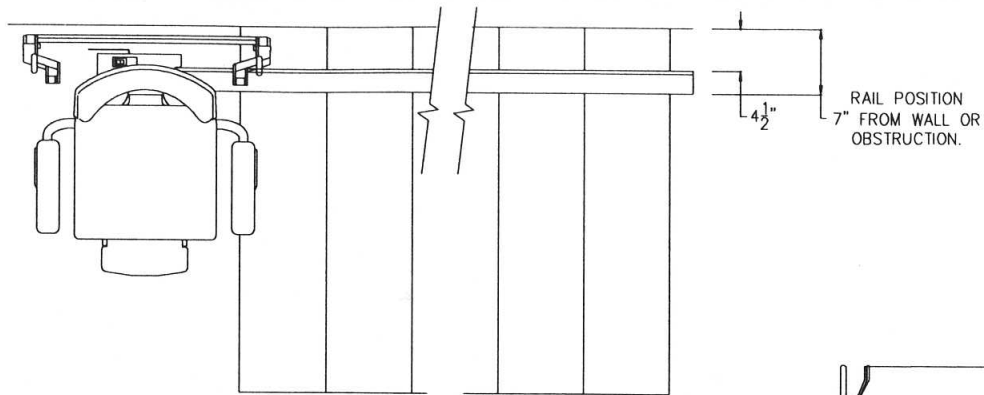
ANGLES: 23 TO 45 DEGREES (Specials up to 50 Degrees)

SPEED: 32 FEET PER MINUTE UNLOADED  
25 FEET PER MINUTE WITH RATED LOAD  
(SPEED SETTINGS ARE ADJUSTABLE)

FINAL LIMIT SWITCH STANDARD

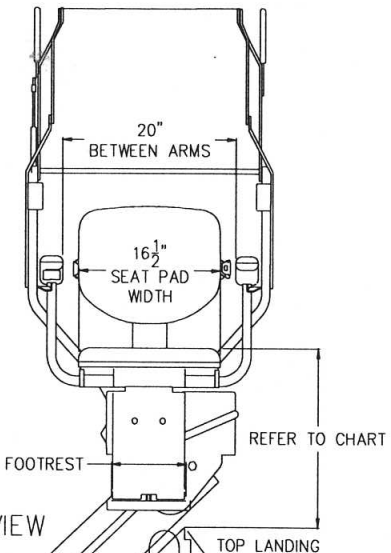
WEATHER RESISTANT COVER SYSTEM

TESTED IN TEMPERATURES RANGING FROM 25-125°F

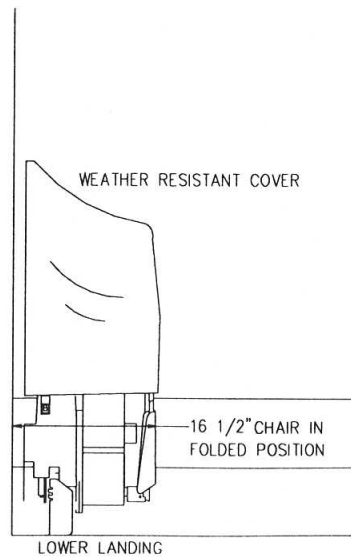
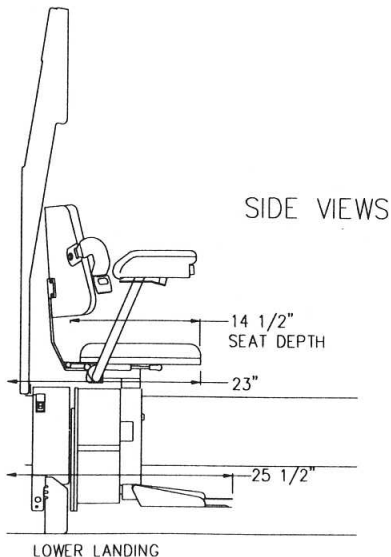
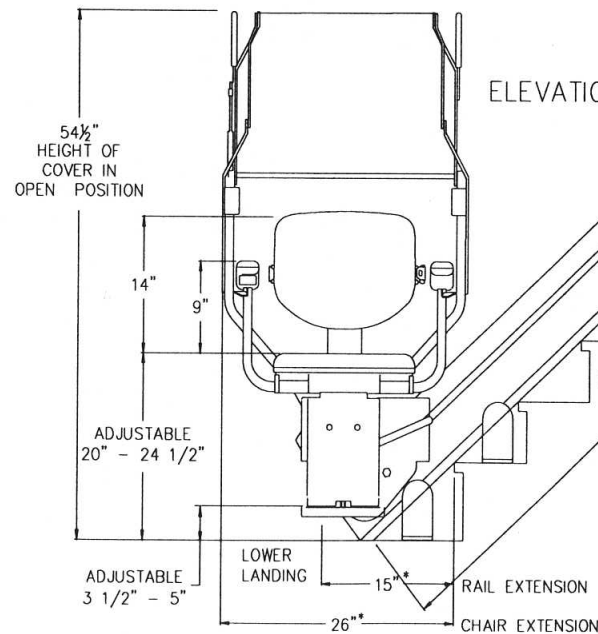


TOP VIEW

# StairFlyer™ ELITE OUTDOOR



ELEVATION VIEW



\* LOWER LANDING EXTENSION DIMENSIONS ARE  
BASED ON 40 DEGREE RAIL SLOPE AND 8" 1ST  
RISER HEIGHT, DIMENSIONS WILL VARY BASED ON  
SLOPE AND RISER HEIGHT.

Model Elite Outdoor SRE 2010 E  
As manufactured for  
Integrity Group Cos., Inc. by  
Bruno Independent Living Aids, Inc.